

Imatest Stray Light (Flare) Fixture

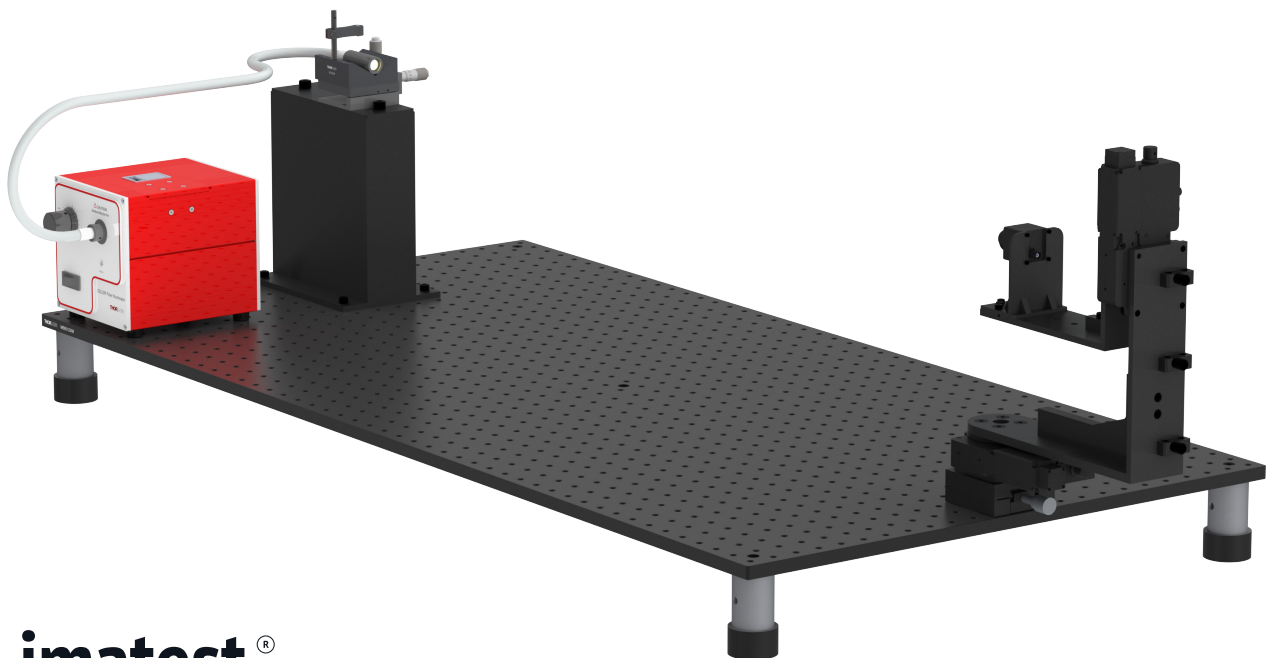
Benchtop fixture for measuring stray light of imaging systems

Why Choose the Imatest Stray Light (Flare) Fixture?

Stray light, also known as flare, is light that reaches the image sensor through non-designed optical paths. Stray light can produce phantom objects within the scene, reduce contrast, and effectually reduce system dynamic range. The Imatest Stray Light Fixture enables you to perform repeatable captures of a bright light source positioned at different angles in (or outside of) the camera's field of view. Using Imatest, various metrics and summary statistics can be derived from the resulting images. The primary metric for stray light analysis in Imatest is Point Source Rejection Ratio (PSRR), which has decades of history within the aerospace and defense industry as a metric for testing and characterizing the stray light of electro-optical systems for airborne and space applications, including telescopes and satellite imagers.

Included with the Imatest Stray Light (Flare) Fixture

- ✓ Imatest Motorized Gimbal
- ✓ Halogen fiber optic light source with pitch / yaw stage, base plate, 3D printed riser
- ✓ Matte black acrylic light shield with mounting hardware
- ✓ 120 cm x 60 cm optical breadboard with metric holes / spacing, shock absorbing feet





Imatest Stray Light (Flare) Fixture Specifications

Specifications	Details
Weight:	38.55 Kg (85 lbs)
Dimensions:	1394 mm x 600 mm x 449 mm
Maximum Field of View:	VFOV: 158° HFOV: >180°
Microstep Size (Default Resolution):	0.0009375°
Accuracy / Repeatability / Backlash:	Accuracy: 0.08° Repeatability: 0.02° Backlash: 0.04°
Maximum Speed:	450°/s
Operating Temperature Range:	0 to 50 °C
Maximum DUT Weight:	2.5Kg (5.5lbs)
Light Output:	50 W Bulb with 3200K Color Temperature (90% CRI)
Power at Fiber Tip:	1.4 W at Maximum Bulb Intensity
Light Intensity Adjustability:	Adjustable from 0% to 100% with manual knob
Operating Wavelength Range:	400 - 1600 nm (Typical)
Output Power Stability:	±0.5% over 8 Hours
Lamp Lifetime:	1000 Hours to 50% Brightness
Electrical (System):	Voltage: 100-240 V AC input Maximum Current Draw: 4 A

