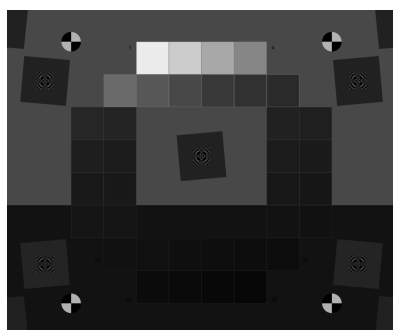


VISNIR Dynamic Range Charts

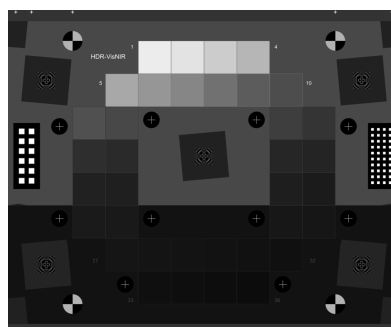
Measure tonal response, noise, and dynamic range with a single image

Why Choose Imatest Dynamic Range Charts?

The Imatest 36-Patch Dynamic Range test charts on VISNIR film have two density ranges to suit every need. The charts allow you to measure the tonal response, noise, and dynamic range of various imaging systems with a single image instead of multiple, exposure bracketed images. The varied tone background density enables proper exposure with automatic exposure cameras and minimizes unwanted stray light influence. VISNIR Film allows for stable attenuation across visible and Near Infrared wavelengths. Ideal for multispectral systems.



*Low Dynamic Range
(LDR)*



*Ultra-High Dynamic Range
(UHDR)*

Standard Compliance

The Ultra-High Dynamic Range (VISNIR-UHDR) chart plus the Imatest DarkWorld Mask illuminated by a 100,000 lux LED Light Box is compliant with the target definitions in the IEC 62676-5 standard.

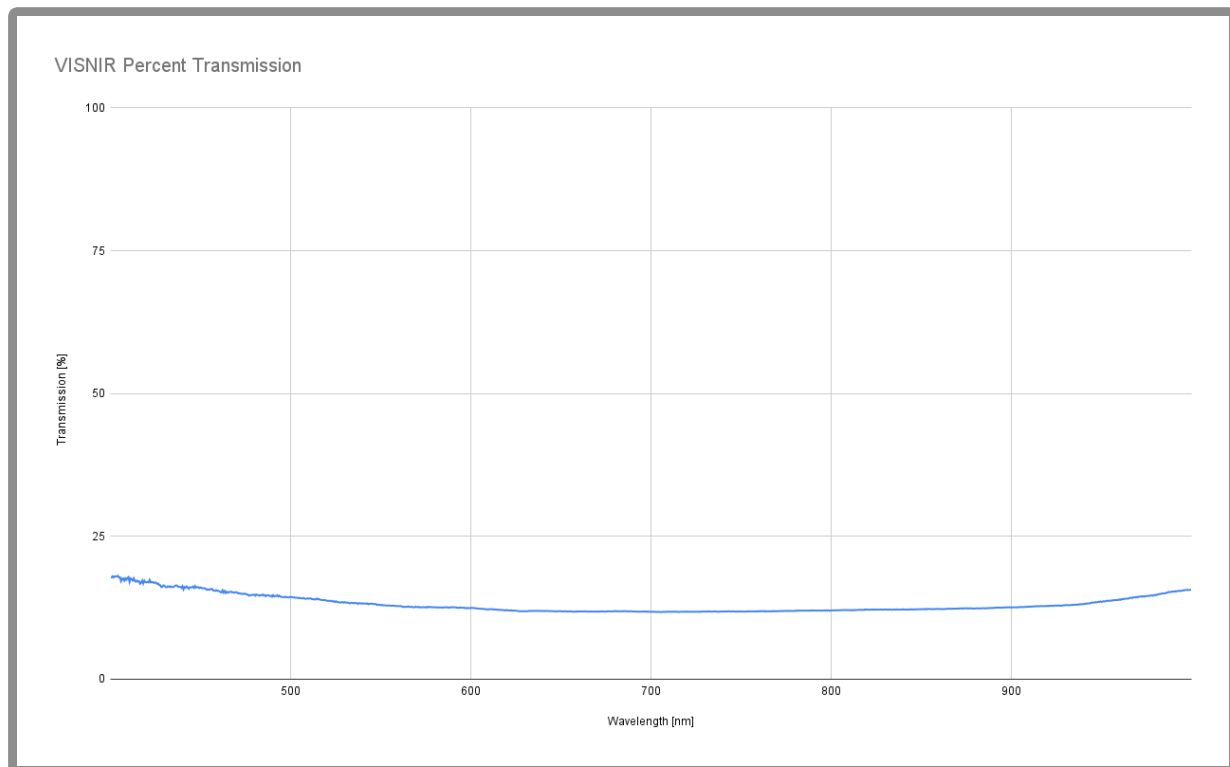
Related Products

To simulate a more ideal dark night scene, the DarkWorld mask can be applied within the framed 4:5 target. This will cut down on flare light and produce a higher dynamic range but may be challenging to auto exposure.

Charts	Density	Spectral Range
Ultra-High Dynamic Range (VISNIR-UHDR36)	0.04-8.00 (160dB)	300nm-1000nm
Low Dynamic Range (VISNIR-LDR36)	0.04-4.00 (80dB)	300nm-1000nm

Imatest recommends using the Dynamic Range Targets with a high illuminance light source (between 10,000 and 100,000 Lux) in order to provide sufficient light to test image sensors over their range of sensitivity. Light sources for both visible and Near Infrared are available.

Spectral Response



VISNIR Dynamic Range Charts
imatest.com/info/dynamic

