

正印科技图像质量测试方案

Image Quality Test Solutions

CS-LB3-250 球形光源 (CS-LB3-250)

Spherical light sources

2025-10-11



Table of Contents

Safety Warnings for Light Source Equipment	错
误! 未定义书签。	
一、CS-LB3 Series Spherical Light Source	4 -
二、CS-LB3 Series Spherical Light Source Parameters:	5 -
三、CS-LB3-250 Spherical Light Source Design Drawings	4 -
四、CS-LB3 Spectral Curve Performance(CS-LB3-D)	6 -

△ Safety Warnings for Light Source Equipment:

When operating the instrument:

- This instrument is an electrical device. For your safety, please follow all relevant national safety regulations and operate strictly in accordance with electrical safety procedures.
- Do not place the instrument in an overheated environment to avoid damage or fire hazards.
- Do not strike or drop the instrument to prevent damage.

During operation:

- Do not disassemble the instrument without authorization.
- Do not use the instrument in a strong electromagnetic environment to avoid interference with normal operation.
- Do not operate the instrument with wet hands or immerse it in water.
- Do not use accessories from this instrument on other devices to prevent electric shock, fire, or equipment damage.
- The instrument's labels, configuration, and manufacturing standards may vary according to regional regulations. Please use the product model that complies with local standards.

一、CS-LB3 Series Spherical Light Source

ColorSpace Co., Ltd. provides a series of versatile lighting systems specially designed for image quality testing.

Application Industries:

- Consumer Electronics
- Automotive Imaging
- Medical Imaging
- Security Surveillance

Key Measurement Parameters:

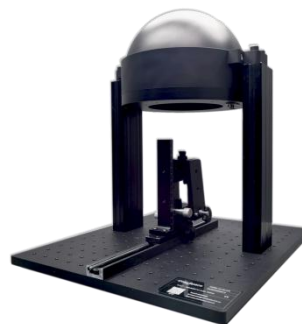
- Auto White Balance (AWB)
- Lens / Color Shading
- Blemish Detection
- Auto Exposure
- Sensor Defect Inspection

Product Features:

- Supports ultra-wide FOV compatibility: 0° ~ 200°
- Delivers highly uniform lighting across the field
- Enhanced compatibility with a wide range of imaging products (e.g. consumer electronics, surveillance, automotive, medical)
- Compatible with both production lines and IQ lab environments
- Opening diameter options tailored for various DUT (Device Under Test) types



Spherical light source (Integrated Design)



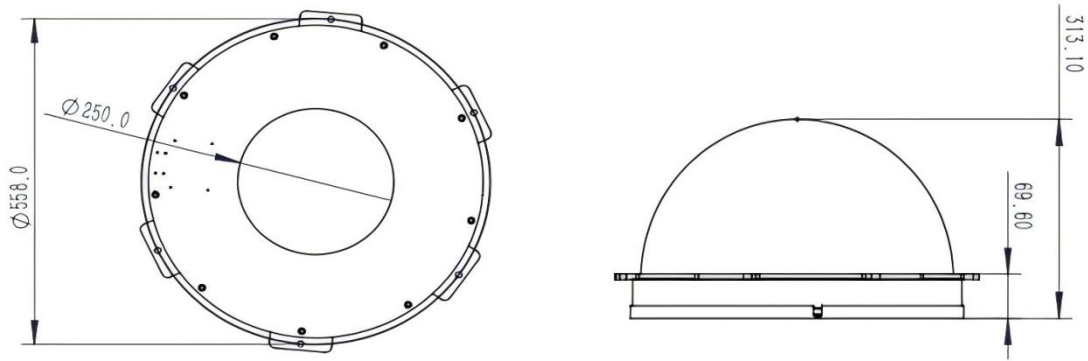
Spherical light source (Split-Type Design)

二、CS-LB3 Series Spherical Light Source Parameters:

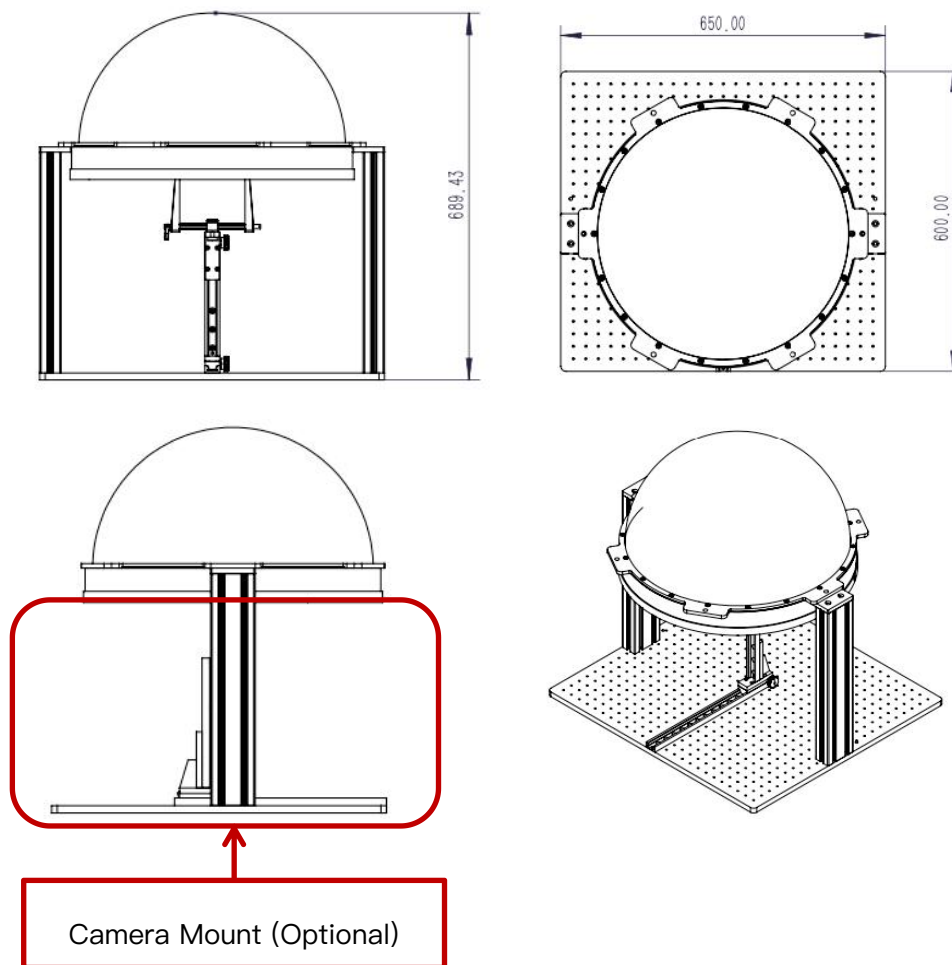
Model	CS-LB3-D-250 Multi-Color Temperature Spherical Light Source	CS-LB3-DIR-250 Multi-Color Temperature Infrared Spherical Light Source
Color Temperature	2300K ~ 6500K	2300K ~6500K
Illumination Range	10Lux ~ 10000Lux	10Lux ~ 10000Lux
IR Range(Optional)	-	850nm / 940nm
Spectral Wavelength Range	-	0-1000uw/cm ²
CRI	92-98 (A、D50、D65)	92-98 (A、D50、D65)
Uniformity	> 95	> 95
Applicable FOV	0 ~ 200°	0 ~ 200°
Opening Diameter	250mm	250mm
Control Method	Standard Configuration: Touchscreen Optional Configuration: Light Source Control Software V3.0 [RS485 Communication Interface]	
Control Software	Optional : Light Control3.0 (To control luminance, CCT and Spectrum,etc)	
Open API	Optional	
Test Applicaton	Lens Shading,Color Shading,AWB,AE,Blemishes,OTP etc.	
Accessories	<ul style="list-style-type: none"> - Spherical Light Source × 1 - Controller × 1 - Power cord × 1 - Control line × 1 	
Light source bracket	Optional	Optional
Power	60W	60W
Supply Voltage	AC 100-120V /200-240V; 50/60Hz	
Working Environment	Indoor: 15°C ~ 25°C; Humidity: 30% ~ 50%	
Industries	Automotive camera,surveillance camera,360 degree camera,Panorama camera etc.	

三、CS-LB3-250 Spherical Light Source Design Drawings

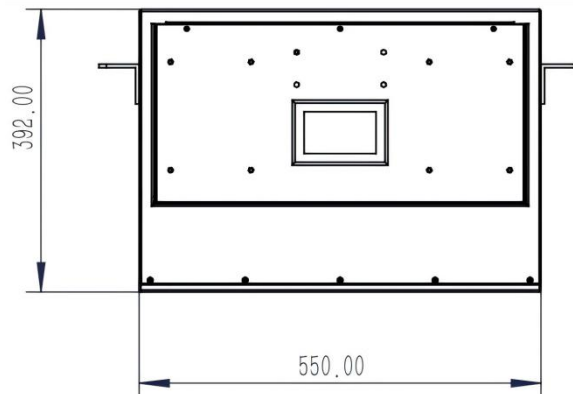
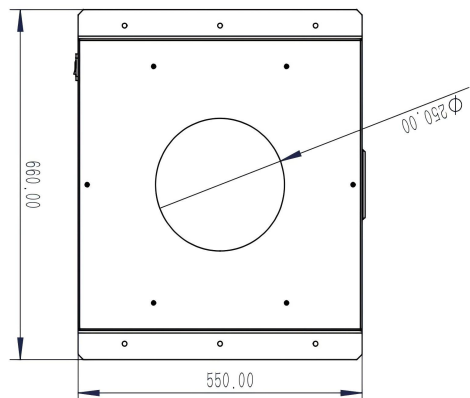
LB3-250 spherical light source (Split-Type Design): Optimized for production line applications, this version separates the integrating sphere from the control and driving units, allowing flexible installation and integration into automated testing systems.



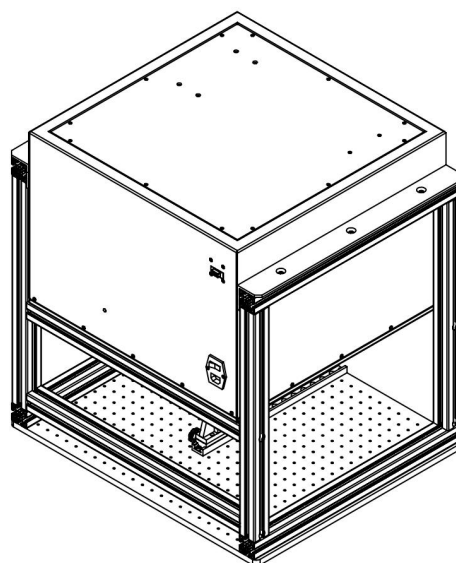
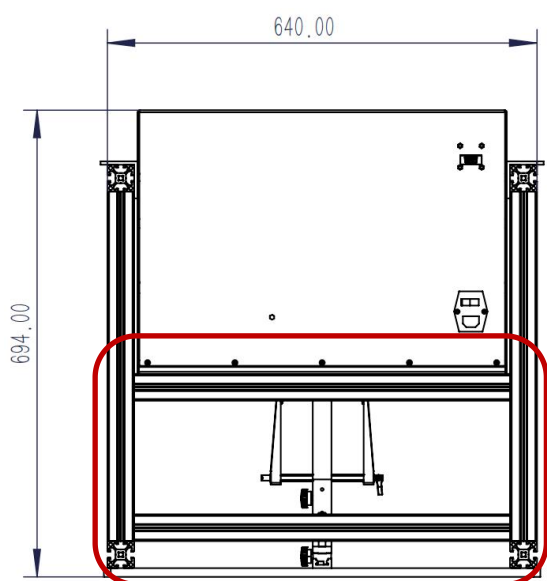
250mm opening + Camera Mount (Optional) Drawing:



LB3-250 spherical light source (Integrated Design): Ideal for laboratory use, this all-in-one structure combines the integrating sphere, light control system, and mounting components into a compact unit for easy setup and operation.

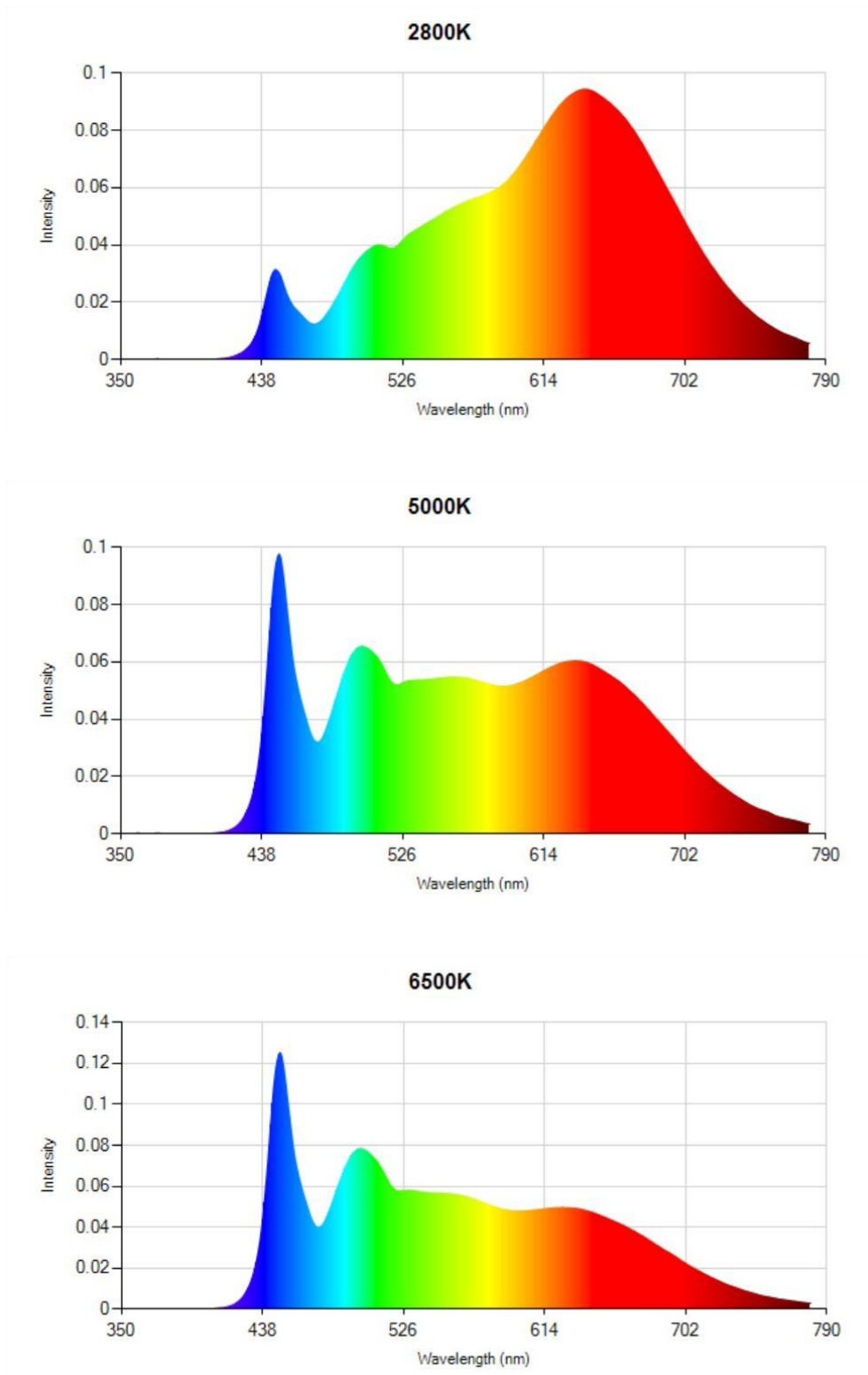


250mm opening + Camera Mount (Optional) Drawing:



Camera Mount (Optional)

四、CS-LB3 Spectral Curve Performance(CS-LB3-D)



ColorSpace Co., Ltd.

Tel: 400-886-3881

E-mail: sales@colorspace.com.cn

Web: www.colorspace.com.cn

Knowledge Base: <http://kb.colorspace.com.cn/kb/>

Address: Room 2-1101, the South Area of Lvdiqihang International, Shunyi District, Beijing, China

About ColorSpace:

ColorSpace Co., Ltd., founded in 2011, focuses on the field of optical image test and provides one-stop image quality laboratory solutions, automated testing solutions, image testing and tuning service solutions for consumer electronics, security monitoring, automotive imaging, medical imaging, industrial vision, aerospace and other industries.

ColorSpace has professional R&D team and technical capabilities, with professional image testing laboratories, and service outlets in Beijing, Shenzhen, Jiaxing, Hangzhou, Wuhan, Xi'an, and other places. The image testing laboratory has obtained certifications such as CNAS, CMA, ISO 9001, etc.



【COLORSPACE】Public WeChat



Scan the QR code to book a lab